



MasterConsole

DIGITAL DUAL

KVM Switch with Dual Display to Access & Control Multiple Dual-Head Servers

Raritan's MasterConsole® Digital Dual KVM switches (MCD-DUAL) enable a single user to manage and control multiple dual-head servers with borderless mouse switching. MCD-DUAL switches can be cascaded to manage up to 64 servers at distances up to 150 feet (45 meters). Standard Category 5/6/6e unshielded twisted-pair (UTP) cables are used to connect computers. Ports can also be switched via mouse movement, hotkeys, or OSD.

Choose from two MCD-DUAL models: MCD-104-DUAL with four dual ports or MCD-108-DUAL with eight dual ports. Both models support stereo audio by using MCD VGA combo cables or MCD HDMI CIMs. They also allow the sharing of two displays between multiple dual-display computers, supporting configurations such as screen duplication and extended-view modes to fit multiple use cases.

MCD-DUAL KVM switches support the latest digital video user interfaces — DVI, HDMI, and DisplayPort. Maximum video resolution can be supported up to 1920x1200@60Hz (Analog), 1920x1080@60Hz (Digital) up to 150 feet thru UTP cable connections by MasterConsole CIMs (MDCIMs) or MasterConsole KVM combo cables (MDUTP).

FEATURES

- Manage Multiple Dual-Head Servers with Dual Display
- Support Port Switching by Mouse
- Connect to Servers with VGA, DVI, HDMI, and DisplayPort Video
- Space-Saving Design
- HD Video Resolutions
- MasterConsole Digital Computer Interface Module (MDCIM) Technology
- Simple Installation
- AutoScan and AutoSkip
- New User Privilege Level

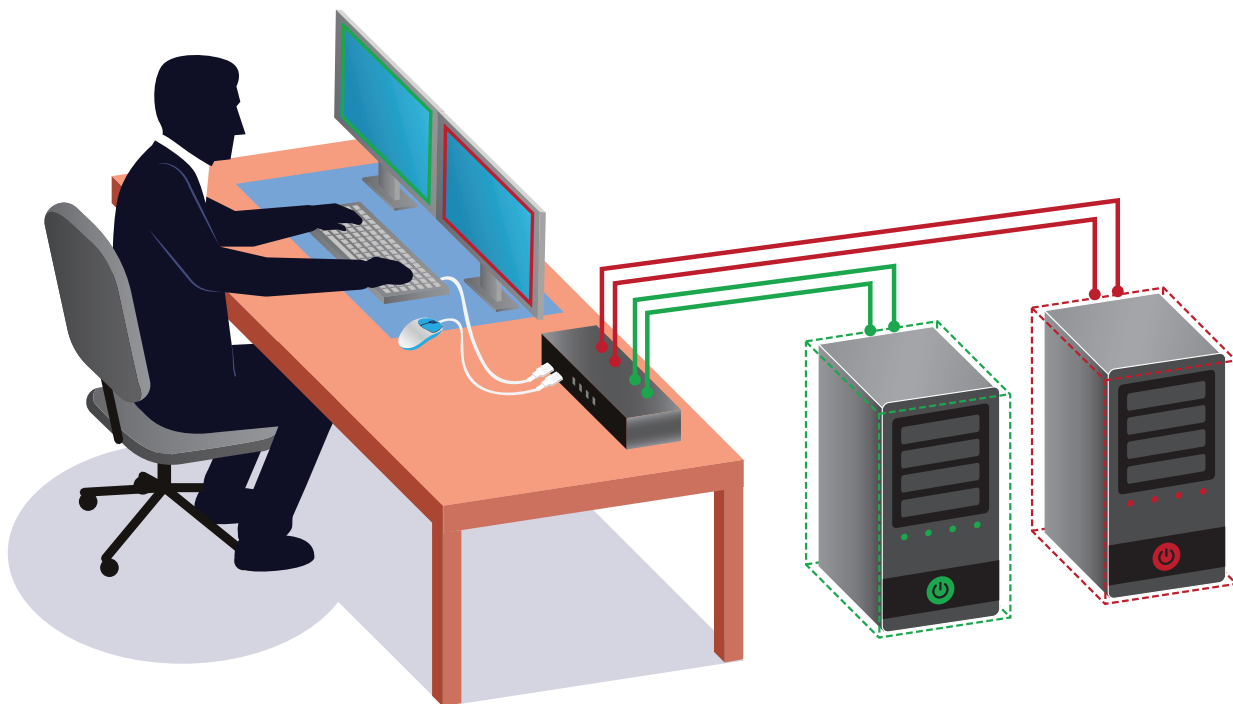
FEATURES & BENEFITS

- Support Dual-Display Output: Supports multiple video interfaces via CIM (MDCIM-DVI/HDMI/DP) & UTP VGA cables.
- Support Resolutions up to 1920 X 1200: Supports the highest video resolution of up to 1920x1200 @60Hz and 1920x1080 @ 60Hz.
- Manage Multiple Dual-Head Servers: Connect to servers up to 100 feet away via DVI/HDMI/DP CIMs or UTP VGA combo cables.
- Support Port Switching by Mouse: Save time and increase productivity by quickly switching channels with the mouse.

KVM Access with Dual-Display and Borderless Mouse Switching

DUAL DISPLAY KVM ACCESS AND CONTROL OF MULTIPLE SERVERS

The MasterConsole Digital Series efficiently consolidates access and control of multiple servers for one or two users. Models are available for KVM connections to 8, 16, or 32 servers.



MASTERCONSOLE DIGITAL DUAL KVM SWITCH SPECIFICATIONS

Models	Console Drawer KVM Switch (MCD-LED) Specifications	Dimension (W x D x H)	Weight	Maximum Input Power Rating/Power Consumption
MCD-104 DUAL	1 User, four dual Ports, DUAL Display, 1920 x 1200@60Hz (Analog), 1920 x 1080@60Hz (Digital) Video Resolution, Operating/Storage Temperature: 0-50°C / -20°C-60°C, Humidity: 0-80% RH , Noncondensing 140,689 Hours MTBF	440 x 150 x 44mm	1830g	AC100-240V, 1.5A; DC12V/5.42A (65W)
MCD-108 DUAL	1 User, eight dual Ports, DUAL Display, 1920 x 1200 @60Hz (Analog), 1920 x 1080@60Hz (Digital) Video Resolution, Operating/Storage Temperature: 0-50°C / -20°C-60°C, Humidity: 0-80% RH , Noncondensing 105,038 Hours MTBF	440 x 150 x 44mm	1860g	AC100-240V, 1.5A; DC12V/5.42A (65W)

COMPUTER INTERFACE MODULES (CIMS)

Models	Computer Interface Modules (CIMS) Specifications
MCDCIM-DVI	CIM for DVI video output + USB for keyboard and mouse
MDCIM-HDMI	CIM for HDMI video output with HDMI Audio + USB for keyboard and mouse
MDCIM-DP	CIM for DP video output + USB for keyboard and mouse
MDCIM-VGA	CIM for video resolution up to 1920 x 1200@60hz (VGA) Audio + USB for keyboard and mouse

MDUTP VGA/AUDIO KVM COMBO CABLES

Models	MDUTP VGA KVM Combo Specifications
MDUTP20-VGA	2-meter cable, VGA + USB + Audio
MDUTP40-VGA	4-meter cable, VGA + USB + Audio
MDUTP60-VGA	6-meter cable, VGA + USB + Audio

